

THE MOSAIC

Published monthly by
EMMANUEL BAPTIST CHURCH
275 STATE STREET
ALBANY, NY 12210

Office: (518) 465-5161

emmanuelalbany@juno.com

November 2021

Volume XXXVIII No. 10

Pastoral Ponderings



Community, connection, relationship – these words often get bandied about in churches. We might often speak about our relationship with God and with each other. A church might seek to deepen a sense of community among its members or to establish an identity within the geographical community in which it is located. These are not new words for church people to use, but they are words that have taken on deeper or more nuanced meaning in last year and a half.

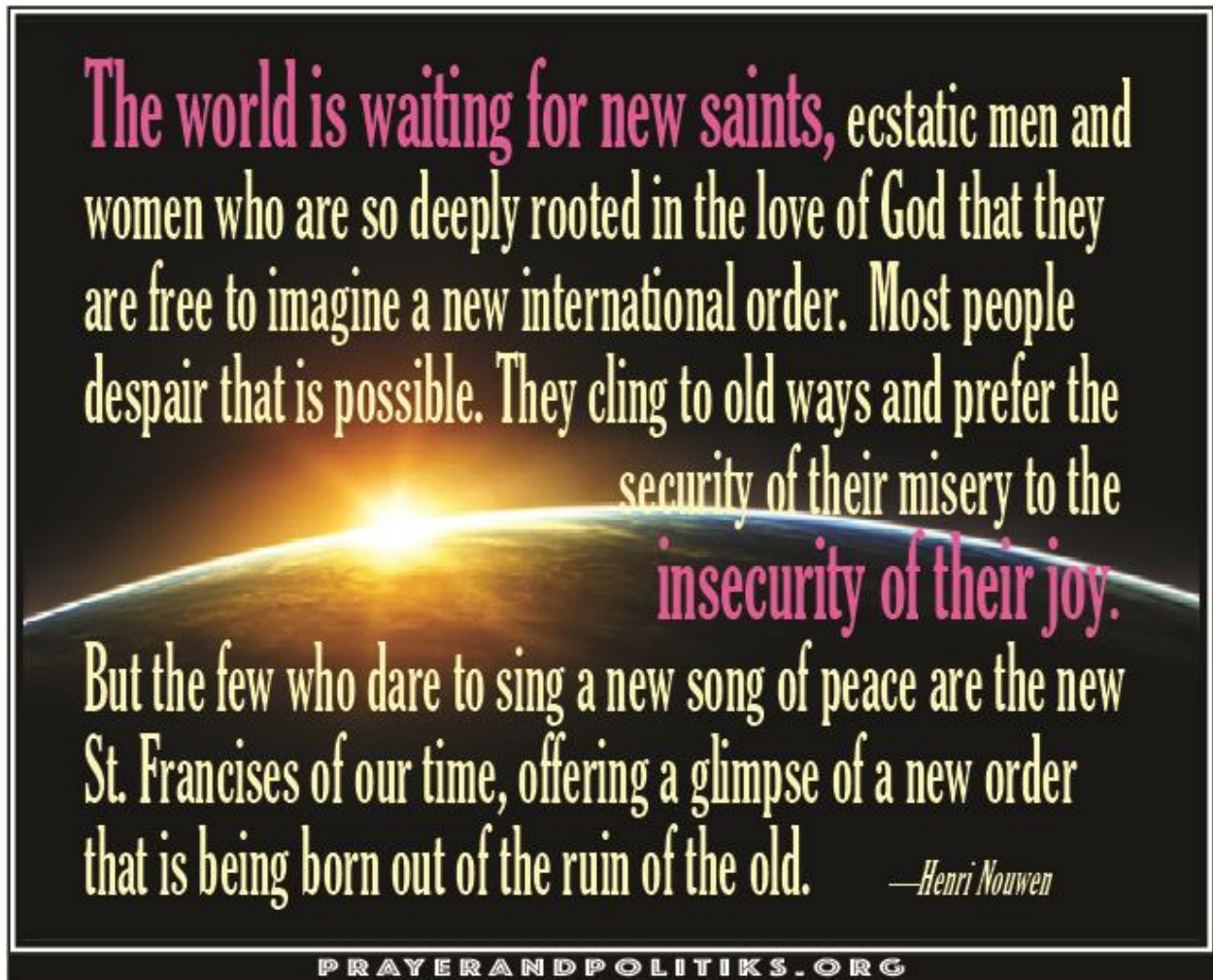
A world-wide pandemic is a great eye-opener about global relationships. Whether we are thinking about the contagion rates as a Covid variant spreads from one hemisphere to another or empty store shelves because of interruptions to the supply chain, we cannot help but notice our interdependency. Our decisions influence the lives of people in Australia. The behavior of Kenyans may be felt in Italy. The question “who is my neighbor?” starts to sound different.

Sunday morning worship in November will highlight a different kind of connection each week. We begin with All Saints Sunday on November 7, remembering the relationships we have with other believers across time and space. On November 14, we will focus on stewardship, the contributions of time, energy and money that all of us make to support all the ministries we do together. Also on November 14, we will welcome new members, celebrating new connections and relationships. Thanksgiving Sunday, November 21, will offer gratitude for the abundance and blessing that are ours and for the ways our lives are shaped by times of well-being and adversity. Advent begins on November 28, reminding us again of the intimate relationship God initiated with the world in a vulnerable baby born in Bethlehem.

Beyond Sunday morning worship, the Thrive ministry team continues to lift up the impact of racism. We seek to understand the ways that patterns of thoughts and behaviors have formed such damaging connections so that now there are entire systems of oppression which are largely invisible to many of us. Join in the conversation about the book *The Warmth of Other Suns* or the movie *Selma*.

Community, connection, relationships – these seem more vital to life than ever before. Thank you for the efforts you are making to stay connected to each other in this time.

Peace,
Kathy



If you have been waiting for the opportunity to worship in-person, here it is. **Beginning Sunday, November 7, we will offer hybrid worship again.** You may continue to worship on Zoom. You may attend worship in the sanctuary. Those who attend in person will be asked to mask and maintain distance. We will sing with masks on.

Please note that we will heat the sanctuary and will also have the upstairs windows open to increase circulation of fresh air. The sanctuary will likely get cooler than usual. Please dress warmly. Feel free to keep your coat with you and/or to use one of the throw blankets provided. We expect to continue to offer worship on Zoom and in-person unless the Covid situation worsens.



Alliance of Baptists

We continue to discern whether to become a congregational partner with the Alliance of Baptists. This will be put to a congregational vote at some point.

Everyone's input is valued. If you want more information about the Alliance of Baptists, you might visit the website <https://allianceofbaptists.org/>. One identity statement there reads "We are a faith community knit together by our love for one another and God, combining progressive inquiry, contemplative prayer, and prophetic action to bring about justice and healing in a changing world."

The Who We Are tab provides a sense of the organization's history and current direction. Some Emmanuelites attended the virtual fall gathering in October. If you missed it, you can watch the recording here:

<https://youtu.be/HO9HWV9RU9Y>



Stewardship Sunday, November 14

Emmanuelites are generous with your time, money, energy and care. Our November 14 worship will focus on the ways we support each other and the ways we support our mutual ministry, including our financial support. Before that day, please make your pledge to next year's life together at www.emmanuelalbany.net/pledge

If you would prefer a paper pledge card, please contact Dorothy in the church office.

Third Friday Movie Conversation

Selma

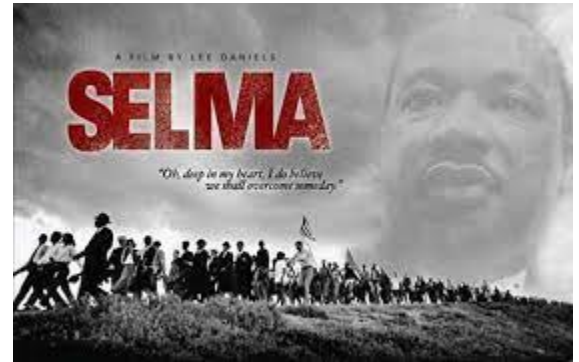
November 19 @ 7 pm

Zoom

Watch the movie on your own schedule. Join us for conversation on the third Friday of the month. *Selma* is an historical drama produced in 2014. It is based on the 1965 march from Selma to Montgomery Alabama in the face of violent opposition, an event that became a milestone victory for the civil rights movement.

Selma may be available at your local library. It is also currently available to rent for \$4 on YouTube

<https://www.youtube.com/watch?v=Abkka8Vf2>



Advent begins November 28 with the theme, *Close to Home*. When something hits close to home, it affects us deeply. During the Advent and Christmas season, we journey through scriptures and rituals that are tender, heavy with emotion, and vulnerable. We carry the memories and truths of this season close to our hearts.

Close to Home acknowledges the “already but not yet” tension of our faith: Emmanuel is with us, and yet, God’s promised day—our everlasting home—is not fully realized. It names our deep longing for God to come close to us. Plan to observe this holy season together. More information coming soon.

Job Opportunities at Interfaith Partnership for Homeless

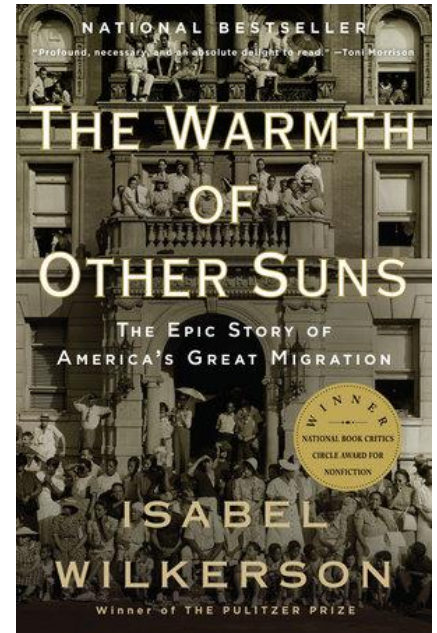
Interested in exploring job opportunities at IPH? Since its establishment in 1984, FOCUS Churches has been a driving force behind the development of this special non-profit organization. Its goal is focused on addressing the needs of the homeless and low-income community with services that specifically encourage self-sufficiency, empowerment and stability. Success, of course, depends on the empowerment of a dedicated, skilled and compassionate staff – from Cook, to Clothing Pantry Attendant, to Direct Support Staff, to Communications Manager and more.

Listed among the “Best Places to Work” by the Times Union and the Albany Business Review, IPH has much to offer. To learn about available positions, check IPH’s website at <https://www.iphny.org/jobs>.

Questions? Feel free to contact First Presbyterian Church’s member, Carol Bullard by phone or e-mail: 518-463-8256 or carol.f.bullard@gmail.com.

The Warmth of Other Suns
November 1 and November 9
7:00 p.m. on Zoom

In *The Warmth of Other Suns*, Isabel Wilkerson draws on ten years of research to tell the remarkable story of America's Great Migration. Over six million blacks migrated North from 1915-1970, but Wilkerson focuses on three representative people—Ida Mae Gladney, George Swanson Starling, and Robert Pershing Foster—who left the South in 1937, 1944, and 1953, respectively. Unlike most migrations, the blacks who left the South were seeking full citizenship *within* their own country, rather than traveling to an entirely new land. This book documents the racial terror that reigned in the Jim Crow South which drove them to make the perilous journey, risking their lives and livelihoods in the process.



Join Zoom Meeting

<https://ministrelife.zoom.us/j/97258919821?pwd=V3R0SXNVS0Nob1RWnkJxT3hhckZYUT09>

Meeting ID: 972 5891 9821

Password: Emmanuel

Dial by your location

+1 646 558 8656 US (New York)



**Remember the
Food Pantry...**

toothpaste



Happy Birthday...

November

Mary Asala

Judith Henningson

Heather LaBarge

Pat Campbell



1st

8th

14th

22nd



**Deadline for the December
MOSAIC: November 18**

Happy Thanksgiving!



Veteran's Day: November 11
Church Office Closed

Daylight Saving Time Ends
November 7 – "fall back"



Emmanuel Baptist Church
275 State St.
Albany, NY 12210

